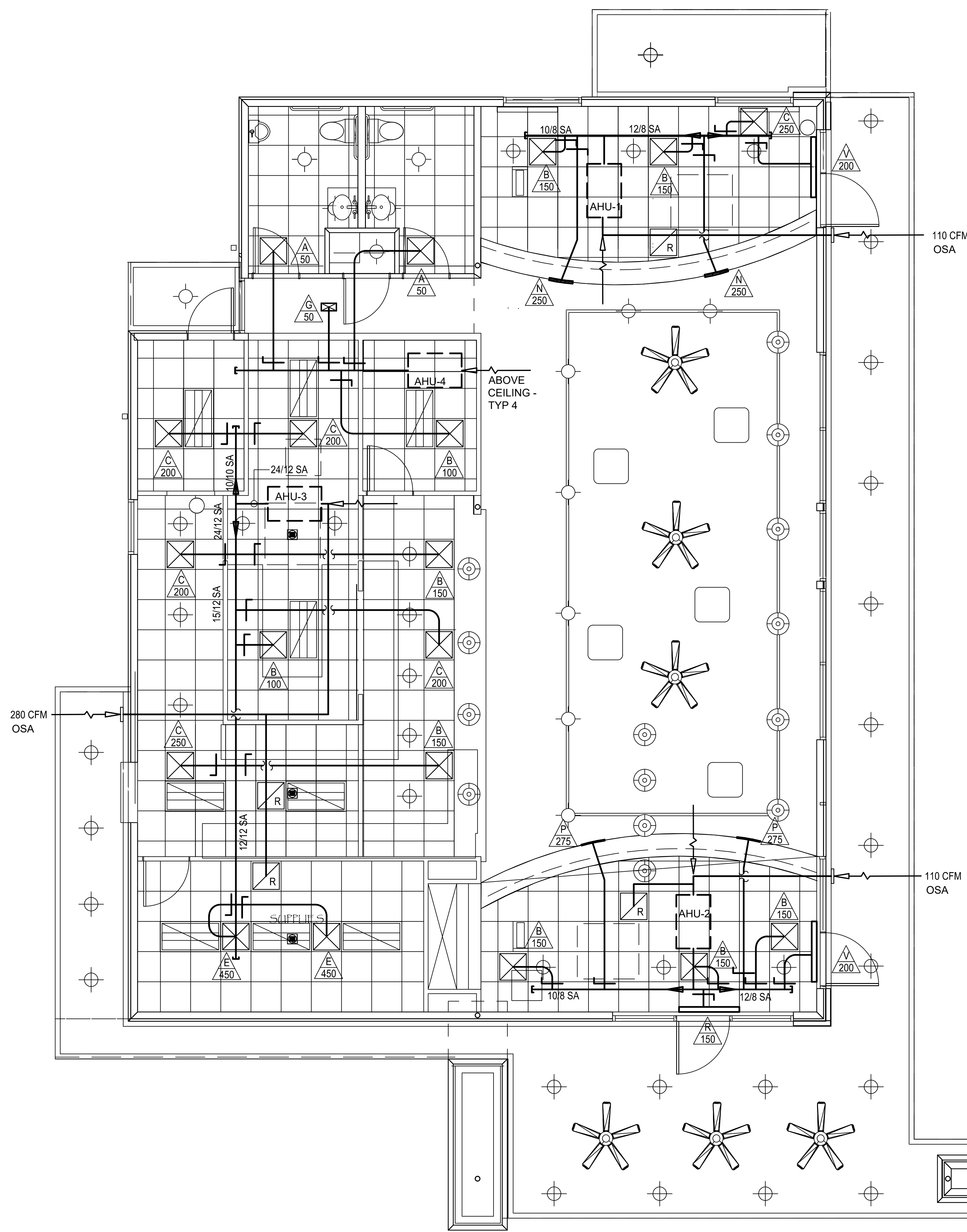


No.	Date	Revisions	App.
			RAS



SCHEDULE OF GRILLES

MARK	MANUFACTURER	MODEL	USE	LOCATION	MAX CFM	NC	SIZE	DUCT SIZE
A	TITUS	TMS-AA	SUPPLY	RCP CEILING	70		24X24	6" DIA
B	TITUS	TMS-AA	SUPPLY	RCP CEILING	150		24X24	6" DIA
C	TITUS	TMS-AA	SUPPLY	RCP CEILING	250	16	24X24	8" DIA
D	TITUS	TMS-AA	SUPPLY	RCP CEILING	350	16	24X24	10" DIA
E	TITUS	TMS-AA	SUPPLY	RCP CEILING	450	13	24X24	12" DIA
G	TITUS	272-RS	SUPPLY	GYPBOARD CEILING	70		8 X 6	6" DIA
H	TITUS	272-RS	SUPPLY	GYPBOARD CEILING	150		10 X 6	8" DIA
J	TITUS	272-RS	SUPPLY	GYPBOARD CEILING	250	16	12 X 6	10" DIA
K	TITUS	272-RS	SUPPLY	GYPBOARD CEILING	350	19	12 X 8	12" DIA
L	TITUS	272-RS	SUPPLY	GYPBOARD WALL	70		8 X 6	6" DIA
M	RUSKIN	ET125	EXHAUST	GYPBOARD WALL	350		12" H X 18" W	
N	TITUS	272-RS	SUPPLY	GYPBOARD WALL	250	16	12 X 6	10" DIA
P	TITUS	272-RS	SUPPLY	GYPBOARD WALL	350	19	12 X 8	12" DIA
R	TITUS	PXP-AA	RETURN	RCP RETURN			24X24	
RR	TITUS	350RSF-SS	RETURN	WALL RETURN	3000	22	36" W X 24" H	36 X 24
T	TITUS	TBD-80	SUPPLY	LINEAR CEILING	150	21	5'LG x 1-1.5" SLOT	8"
V	TITUS	TBD-80	SUPPLY	LINEAR CEILING	250	21	5'LG x 2-1.5" SLOT	10"
W	TITUS	TBD-80	SUPPLY	LINEAR CEILING	350	20	5'LG x 3-1.5" SLOT	12"
XT	TITUS	5300-FS	SUPPLY	SPIRAL DUCT	250	18	16 X 4	
XG	TITUS	5300-FS	SUPPLY	SPIRAL DUCT	350	16	32 X 4	
FD	RUSKIN	D1BD2	FIRE DAMPER	DUCT			MATCH DUCT	

- NOTES
1. PROVIDE ADAPTERS AS REQUIRED FOR TRANSITIONING DUCTS TO GRILLES
 2. COORDINATE GRILLE COLORS WITH ARCHITECTS
 3. PAINT AREAS ABOVE CEILING VISIBLE FROM TYPE R GRILLE BLACK IN ORDER TO LESSEN VISIBILITY.
 4. PROVIDE MANUAL DAMPERS ACCESSIBLE ON BRANCH DUCT TO CALIBRATE AIR FLOWS TO THOSE SHOWN ON THE PLANS.

SUMMARY OF SHELL BUILDING EXHAUST FANS

MARK	LOCATION	TYPE	MANUFACTURER	MODEL NO.	Power	AIR FLOW	S.P.	NOTES
EF-1	RESTROOM - WOMEN'S	CEILING	Penn Barry	ZEPHYR ZT	48 W	75 CFM	0.375"	1, 2, 3, 4, 5
EF-2	RESTROOM - MEN'S	CEILING	Penn Barry	ZEPHYR Z8S	105 W	150 CFM	0.375"	1, 2, 3, 4, 5

- NOTES
1. SUPPORT EXHAUST FAN FROM JOISTS (MINIMUM 2 JOISTS) VIA 1/4" ALL THREAD RODS.
 2. PROVIDE DUCT ADAPTERS TO CONNECT TO ROUND EXHAUST DUCT VIA FLEXIBLE CONNECTOR.
 3. CONTROL EXHAUST FAN VIA CONVENTIONAL WALL SWITCH.
 4. PROVIDE GALVANIZED WALL CAP WITH GRAVITY EXTERIOR DAMPER & INSECT SCREEN. PAINT TO MATCH ADJOINING SURFACE.
 5. PROVIDE MANUAL DAMPER TO ADJUST AIR FLOW TO PRESCRIBED AMOUNTS.

SUMMARY OF AIR FLOWS (CFM)

UNIT	SUPPLY	RETURN	OUTSIDE EXHAUST
AHU-1	1,200	1,100	100
AHU-2	1,200	1,100	100
AHU-3	2,400		200
AHU-4	200		
EF-1			75
EF-2			150
TOTALS	5,000	400	225

SUMMARY OF AIR CONDITIONING HEAT PUMP (HP)

MARK	PAIRS WITH MANUFACTURER	MODEL NO.	EER	REFRIGERANT	VOLTAGE	MCA	MOCP
HP-1	AHU-1, 2, & 4	MITSUBISHI PUHY-P72TKMU-A	11.5	R-410A	208/3	25 A	30 A
HP-2	AHU-3	MITSUBISHI PUHY-P72TKMU-A	11.5	R-410A	208/3	25 A	30 A

PROVIDE HAIL GUARDS AND RUBBER ISOLATION PAD UNDER ACCU. ANCHOR ACCU TO ROOF TO WITHSTAND 100 MPH WIND.

SUMMARY OF AIR HANDLER UNITS (AHU)

MARK	MANUFACTURER	MODEL NO.	AIR FLOW	TOTAL COOLING	VOLTAGE	HEATING	UNIT MCA	MOCP	DIMENSIONS	WEIGHT
AHU-1	MITSUBISHI	PEFY-P36NMHSU-E	1,200 CFM	36 MBTUH	208/1	40 MBTUH	7.7 A	15 A	18-9/16"X49-1/4"X44-1/8" D	214 LBS
AHU-2	MITSUBISHI	PEFY-P36NMHSU-E	1,200 CFM	36 MBTUH	208/1	40 MBTUH	7.7 A	15 A	18-9/16"X49-1/4"X44-1/8" D	214 LBS
AHU-3	MITSUBISHI	PEFY-P72NMHSU-E	2,400 CFM	72 MBTUH	208/1	80 MBTUH	7.7 A	15 A	18-9/16"X49-1/4"X44-1/8" D	214 LBS
AHU-4	MITSUBISHI	PEFY-P96NMHSU-E3	200 CFM	16 MBTUH	208/1	6.7 MBTUH	1.1	15 A	9-7/8"X27-9/16"X28-7/8" D	49 LBS

- BLOWERS SHALL OPERATE CONTINUOUSLY WHILE BUILDING IS IN USE.
PROVIDE MITSUBISHI PAR-U01MEDU-J SMART ME REMOTE CONTROLLER AND RELATED APPURTENANCES.
PROVIDE REFRIGERANT LINES IN ACCORDANCE WITH MANUFACTURER'S REQUIREMENTS.
PROVIDE SMOKE DETECTOR FOR AHU-3 TO SHUT DOWN UNIT WHEN SMOKE IS DETECTED IN RETURN AIR OF UNIT.

MECHANICAL PLAN
SCALE 1/4" = 1'-0"

MECHANICAL PLAN

COFFEESHOP COMPANY CAFE
26819 I-45 NORTH
SPRING, TEXAS 77380

ENGINEERING BY:
QUEST ENGINEERING
304 North Main Street #1
Conroe, Texas 77301
Phone: (713) 252-3729
rsaikowski@consolidated.net
© Ronald A Saikowski PE LEEP AP 2014
TEXAS REGISTRATION NO. FOR ENGINEERING FIRM IS F-10574



I, RON A. SAIKOWSKI, P.E., AUTHORIZED THE PLACEMENT OF THIS SEAL ON THIS DRAWING FOR THE PURPOSE OF ISSUING THIS DOCUMENT AS SPECIFIED BELOW

<input type="checkbox"/>	Not For Construction
<input type="checkbox"/>	For Background Use Only
<input type="checkbox"/>	Preliminary
<input type="checkbox"/>	For Concept Approval
<input type="checkbox"/>	Preliminary Bid Set
<input checked="" type="checkbox"/>	For Preliminary Approval
<input type="checkbox"/>	Check Set
<input type="checkbox"/>	Permit
<input type="checkbox"/>	For Final Approval
<input type="checkbox"/>	For Construction

NOTE:
CONSTRUCTION SHALL NOT PROCEED UNTIL CONTRACTOR HAS OBTAINED ALL PERMITS AND INCORPORATED COMMENTS FROM TEXAS ACCESSIBILITY STANDARDS REVIEW AND PERMITTING OFFICES IN WORK.